

# Oracle Financial Management Analytics

**ORACLE**

**ENTERPRISE PERFORMANCE  
MANAGEMENT SYSTEM**

## KEY BUSINESS BENEFITS

- Provides unified Insights into financial results and close process status
- Leverages existing investments in Oracle EPM and BI technology
- Fast deployment

## KEY FEATURES

- Pre-built dashboards and analytics reduces complexity and TCO
- Pre-built integration with Hyperion applications
- Best in class BI technology
- Reporting on real-time data
- Common security and single sign on with other Oracle EPM Applications

Oracle Financial Management Analytics provides finance executives with visibility and insight into the status of their financial close process and their financial results. Leveraging Oracle's world class Oracle Hyperion Financial Close Suite applications and Business Intelligence technology, it provides a unified solution that can be very quickly deployed with out-of-the-box integration as well as packaged dashboards and analytics.

## Get Insight into the Extended Financial Close Process and Results

For many organizations the extended financial close process involves tens or even hundreds of people and hundreds or thousands of tasks. This represents a major project that is repeated on a monthly, quarterly and annual basis. Too often it is managed by manual lists and processes along with disconnected systems which present a challenge for consolidating close process status and financial information for management. CFO's and senior financial executives need to quickly get access to all the information associated with the financial close process through a single dashboard reporting facility that provides a consistent unified view across multiple applications. Only with this level of integration and access can they get to the root causes of issues with the financial close process and take timely action to resolve them.

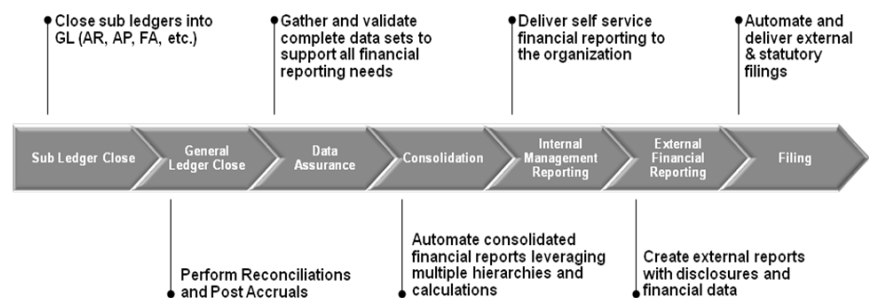


Figure 1: The Extended Financial Close Process

## Oracle Financial Management Analytics – Key Features

Oracle Financial Management Analytics is deeply integrated with Oracle Hyperion Financial Close Management and Oracle Hyperion Financial Management to provide business critical information about the financial close process and financial results. Using Oracle Business Intelligence Enterprise Edition technology, it leverages

**ORACLE**

investments already made in Oracle Hyperion Financial Close Suite modules to provide senior finance management with unified insight into the current position of the financial close process as well as the financial results. Delivered with a wide range of pre-packaged dashboards and analytics, and using its integrated configuration utility, Oracle Financial Management Analytics is quick to deploy and rapidly delivers real benefits.

**PRE-BUILT DASHBOARDS INCLUDE:**

<p>Financial Management Dashboards</p> <ul style="list-style-type: none"> <li>Income Statement</li> <li>Balance Sheet Statement</li> <li>Cash flow Statement</li> <li>Key Performance Indicators</li> </ul>	<p>Financial Statement Report, Monthly\Quarterly Analysis, Regional Analysis, Analysis by multiple Custom Dimensions, Periodic Analysis</p>
<p>Process Management</p>	<p>Process Management (PM) Metrics, PM Trend Analysis, PM Overall\Entity Status</p>
<p>Close Manager</p>	<p>Schedule Summary, Schedule Graph, Schedule Milestones\Roadblocks</p>
<p>Account Reconciliation Manager</p>	<p>Reconciliation summary, performance analysis, Trending Analysis, Pro forma trial balance, Adjustment Analysis</p>
<p>Tax Dashboard</p>	<p>Effective Tax Rate, Cash Tax ETR, Tax Loss, Tax Valuation Allowance and KPI's</p>

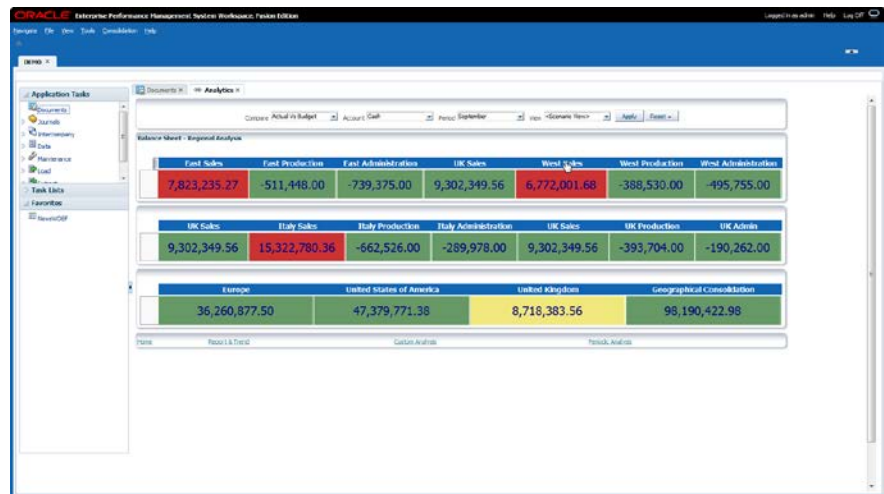


Figure 2: Regional Balance Sheet Analysis

By accessing real-time data, Oracle Financial Management Analytics removes the complexity of data staging and provides up-to-date information for timely action. Standard Oracle EPM system security and access control are leveraged plus Oracle Financial Management Analytics is accessed using the same single sign on as other EPM applications. This delivers a single version of the truth for both data and meta data (hierarchies) that are shared by all users of the Oracle Hyperion Financial Close suite.

In addition, leveraging best of breed Oracle Business Intelligence technology means users can simply extend the application to include additional data sources and Oracle's unique Action Framework plus they can take advantage of facilities like mobile access.

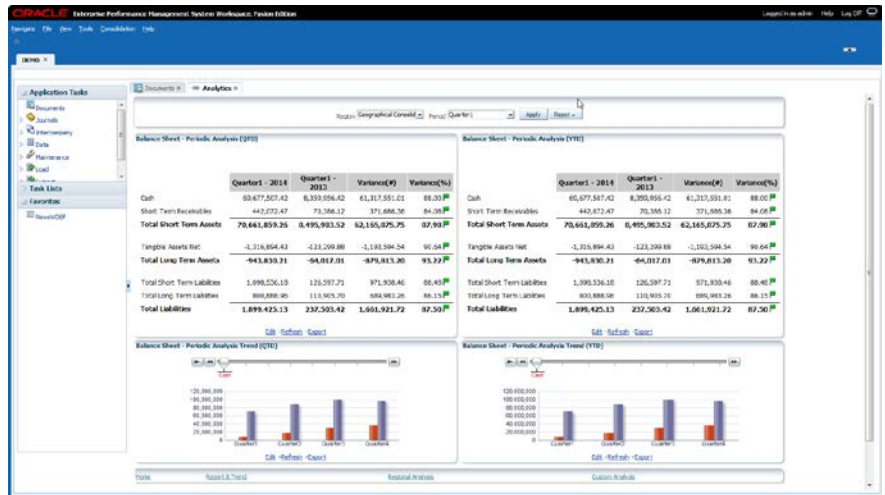


Figure 3: Balance Sheet – Periodic Analysis

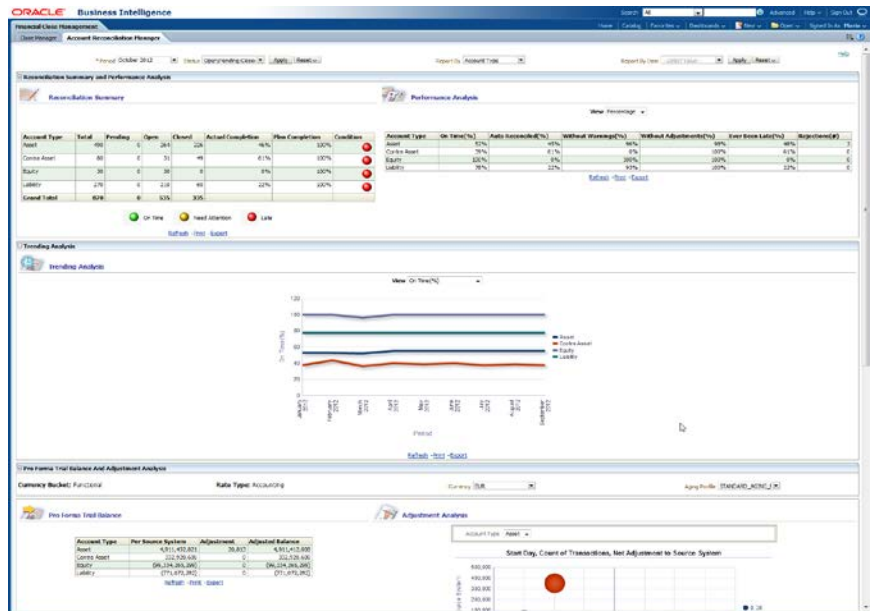


Figure 4: Oracle Financial Management Analytics – Account Reconciliations Manager

## ORACLE ENTERPRISE PERFORMANCE MANAGEMENT APPLICATIONS

Oracle enterprise performance management applications are an integrated, modular suite that supports a broad range of strategic and financial performance management processes and helps unlock business potential.

### RELATED PRODUCTS

Oracle's enterprise performance management applications provide the following capabilities:

- Strategy Management
- Financial Close and Reporting
- Planning, Budgeting and Forecasting
- Profitability and Cost Management
- Enterprise Data Governance.

## Summary

Oracle Financial Management Analytics is a complete reporting application for senior finance management which provides pre-built dashboards and analytic reports for the financial close process and financial results. These features, plus out-of-the-box integration with the Oracle Hyperion Financial Close Suite reduces implementation times and provides a low total cost of ownership. Oracle Financial Management Analytics is part of Oracle's market-leading suite of Oracle Hyperion Financial Close solutions that addresses all stages of the extended financial close from sub-ledger and general ledger closings, to the collection and consolidation of financial results, financial and management reporting, and the creating and submission of regulatory filings. Over 3000 organizations worldwide use Oracle's financial close and reporting solutions to improve the speed and accuracy of their financial reporting process.







#### CONTACT US

For more information about [insert product name], visit [oracle.com](http://oracle.com) or call +1.800.ORACLE1 to speak to an Oracle representative.

---

#### CONNECT WITH US

-  [blogs.oracle.com/oracle](http://blogs.oracle.com/oracle)
-  [facebook.com/oracle](http://facebook.com/oracle)
-  [twitter.com/oracle](http://twitter.com/oracle)
-  [oracle.com](http://oracle.com)

#### Hardware and Software, Engineered to Work Together

Copyright © 2015, Oracle and/or its affiliates. All rights reserved. This document is provided for information purposes only, and the contents hereof are subject to change without notice. This document is not warranted to be error-free, nor subject to any other warranties or conditions, whether expressed orally or implied in law, including implied warranties and conditions of merchantability or fitness for a particular purpose. We specifically disclaim any liability with respect to this document, and no contractual obligations are formed either directly or indirectly by this document. This document may not be reproduced or transmitted in any form or by any means, electronic or mechanical, for any purpose, without our prior written permission.

Oracle and Java are registered trademarks of Oracle and/or its affiliates. Other names may be trademarks of their respective owners.

Intel and Intel Xeon are trademarks or registered trademarks of Intel Corporation. All SPARC trademarks are used under license and are trademarks or registered trademarks of SPARC International, Inc. AMD, Opteron, the AMD logo, and the AMD Opteron logo are trademarks or registered trademarks of Advanced Micro Devices. UNIX is a registered trademark of The Open Group. 0115